



Grease Lock Nut

By: DeeTee Industries Pvt. Ltd., India

Grease Lock Nut

- Used to apply uniform clamping pressure, necessary to lock tooling properly onto the slitter arbors.
- Reduced setup times, due to an easy and quick locking and unlocking mechanism.
- Improved tooling placement accuracy during the clamping, due to an equal axial pressure distribution
- Minimizes the hazards usually involved with manual clamping nuts and also help in reducing vibrations
- Hydraulic clamping nuts can be used commonly in all slitting lines.

Grease Lock Nut – 400 Bar

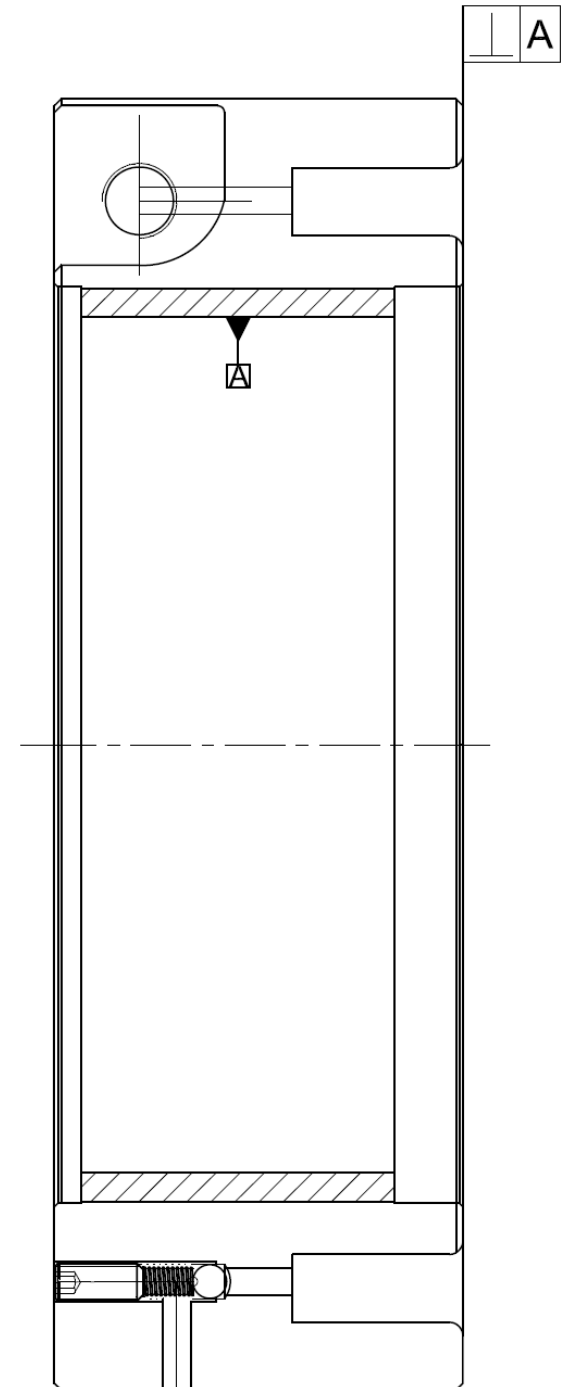


Battery Operated Grease Pump – 400Bar



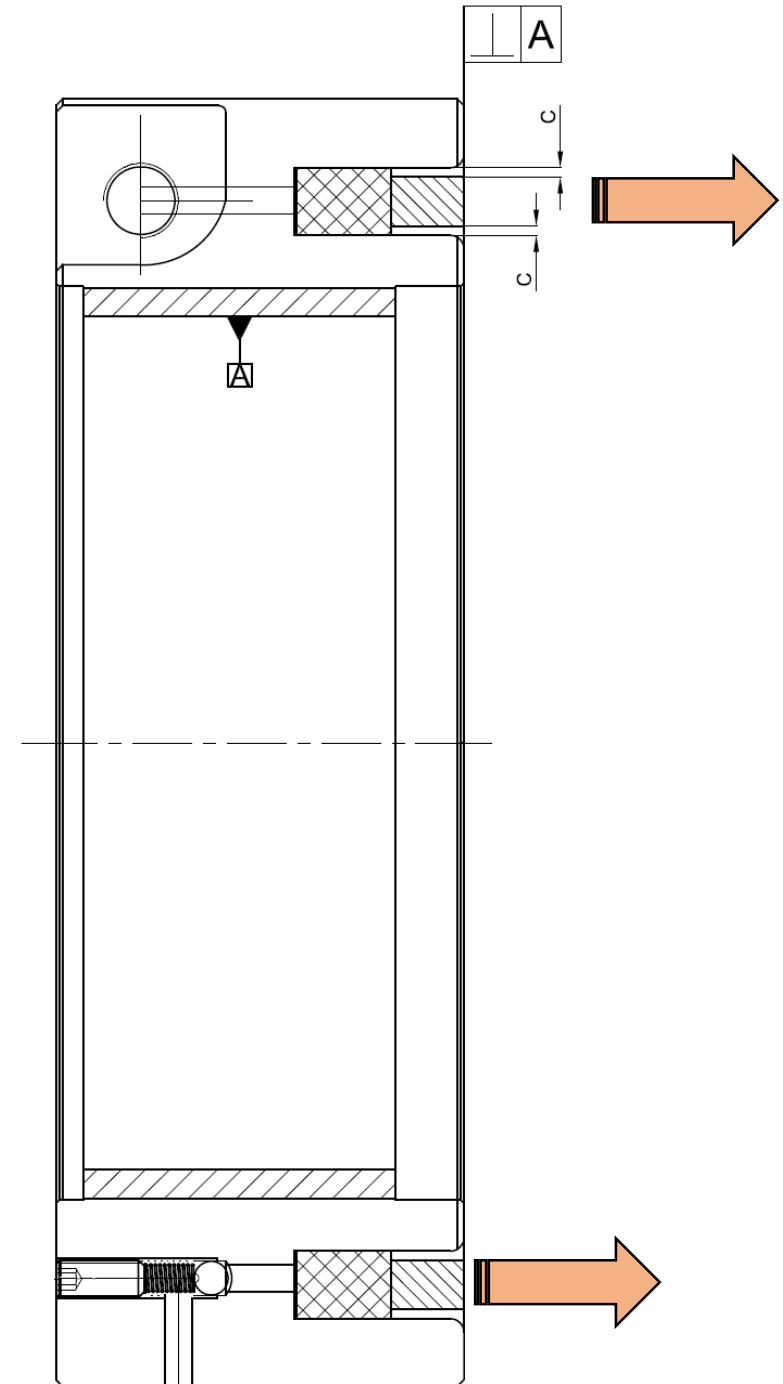
Locknut

- Usually the perpendicularity or orthogonality between the face and thread of the lock nut is poor.

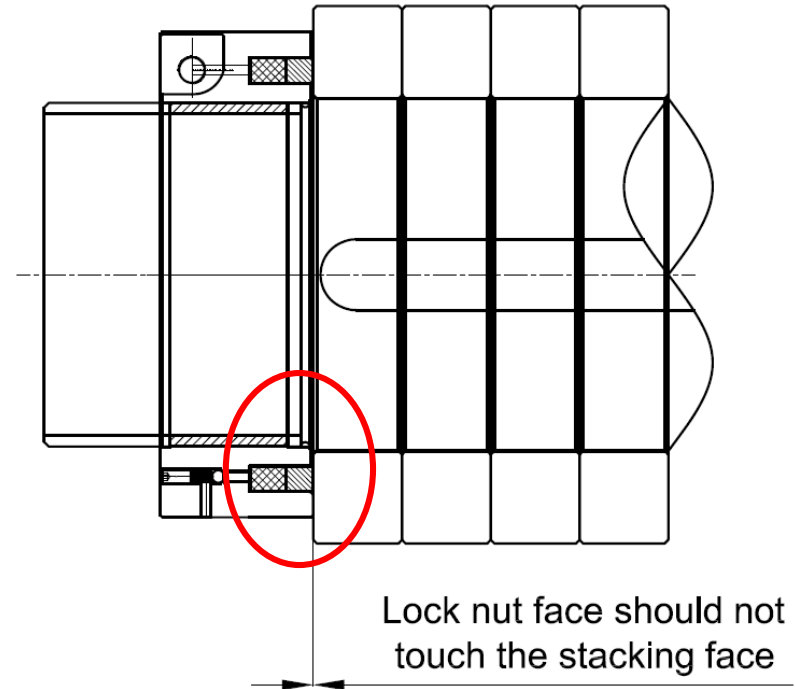
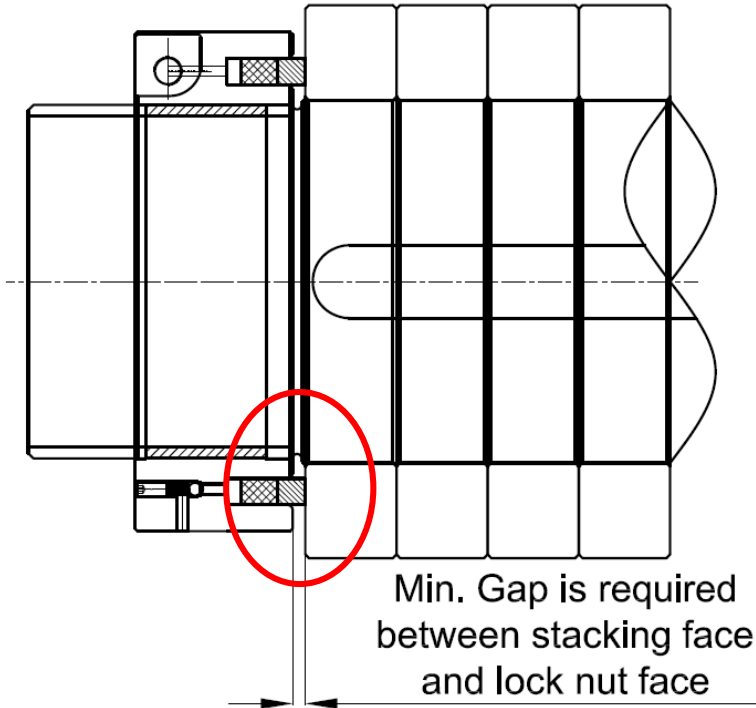


Locknut

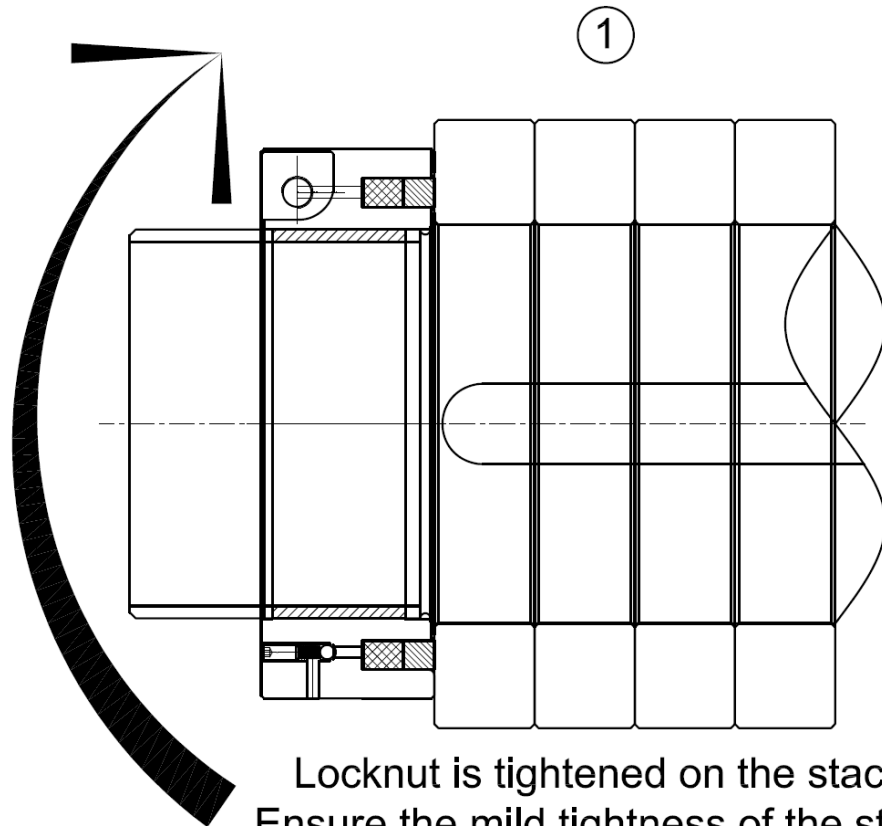
- Hence to compensate this lack of perpendicularity, floating thrust ring is provided in the groove. To make the thrust ring float in the groove, clearance “C” is maintained between groove and thrust ring dimensions.
- This clearance allows thrust ring to float and apply axial load without geometrical error.



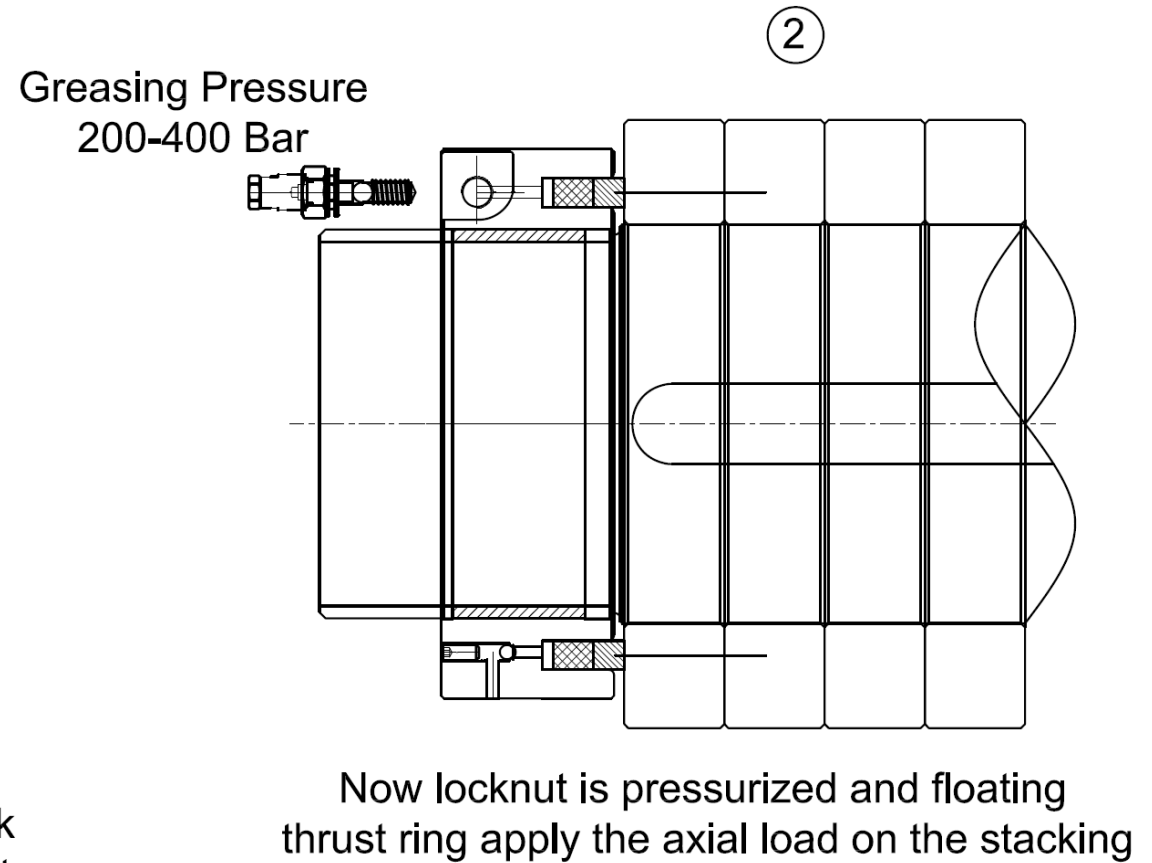
Locknut



Operation

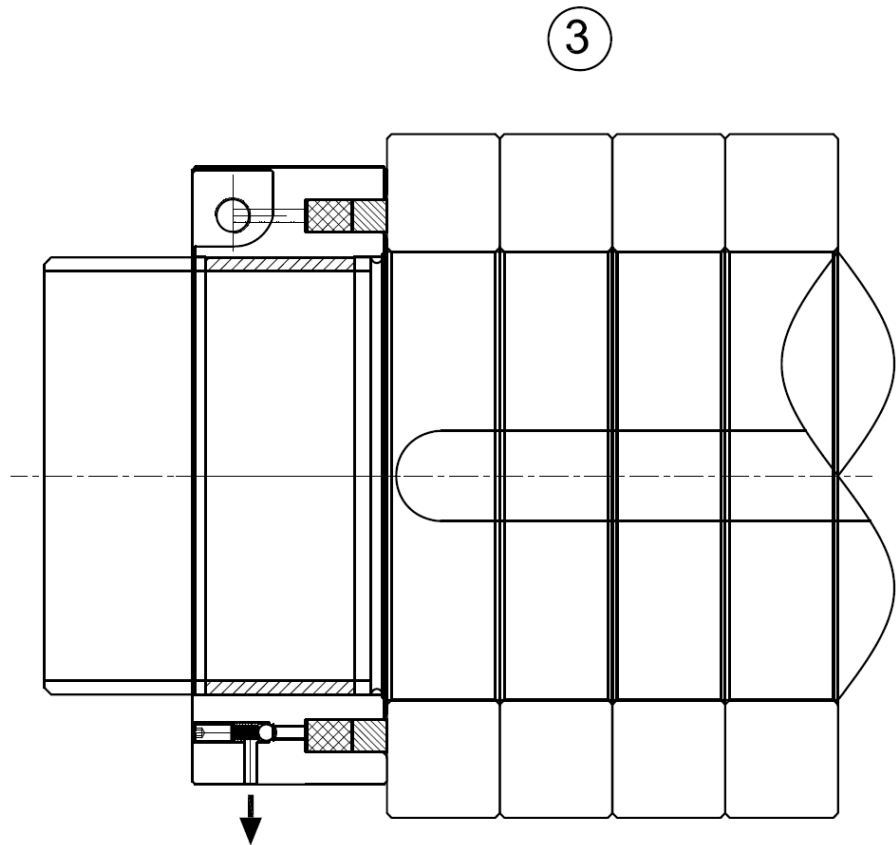


Locknut is tightened on the stack;
Ensure the mild tightness of the stack
with locknut; we should not over tight
the stack with locknut

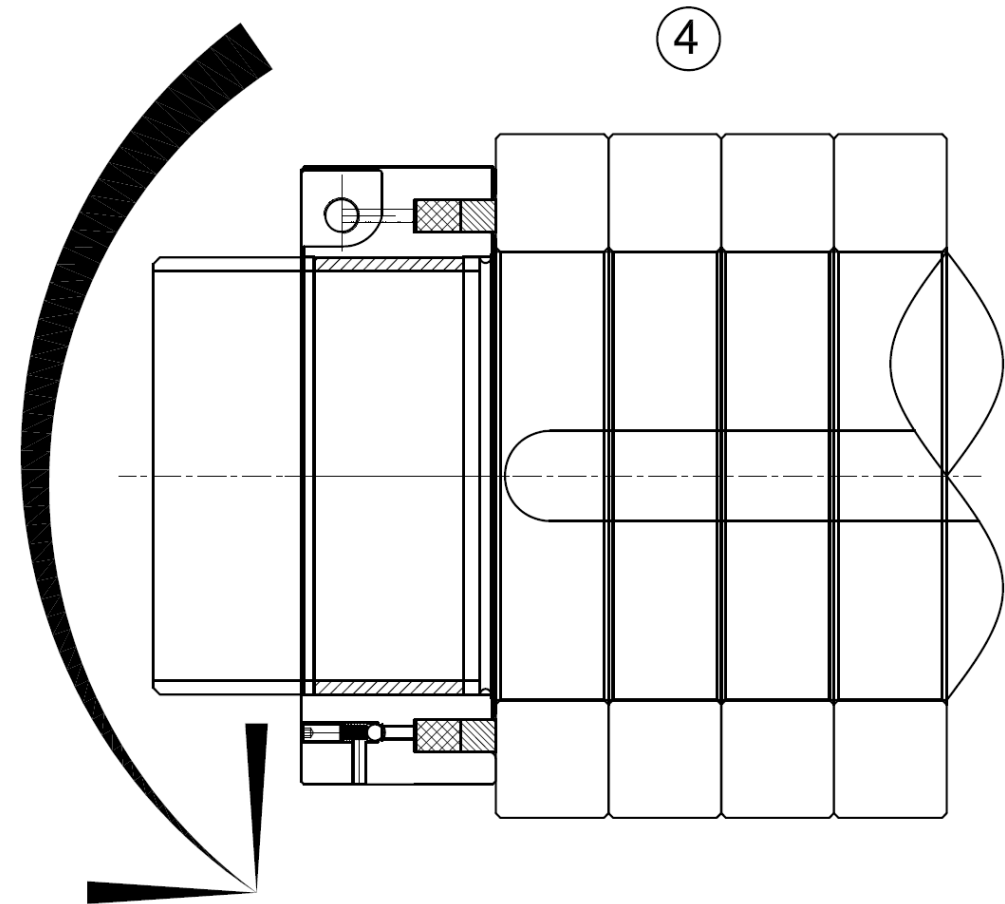


Now locknut is pressurized and floating
thrust ring apply the axial load on the stacking

Operation



Grub Screw is opened to release the pressure



Locknut is loosened to open the stack